

**Progress to 4-3-2026**

The first phase of execution for the project continues as asbestos abatement has progressed to completion on the first floor. On the second floor, abatement has progressed to near completion. Work remaining on this floor includes final cleaning and air monitor clearance.

Meanwhile, preparation has begun for installation of a personnel hoist and waste chute. The hoist will be installed on the exterior of the building along Montgomery Street and allow easier access and movement of workers and equipment to the upper floors. The chute, to be installed within an elevator shaft, will allow waste to quickly and safely be transported from the upper floors to an isolated area of the ground floor where it will be contained and hauled off-site.

To date, 485 tons of ACM waste has been removed from the site and transported in permitted-lined trucks for disposal at Green Ridge RDF Management Facility in Gansevoort, New York. This facility is operated by Waste Management, Inc.

The third-party air monitor continues on-site evaluation and observation and is prepared to collect end samples for each floor as they are completed.

A Public Informational Update Meeting was held at the North American Legion Post 1610 on March 2, 2026. The meeting included an overview of the work schedule and work processes. In addition, a question-and-answer session was held. The meeting was well attended and positive.

**Work Upcoming in the Next 4 Weeks**

Cold weather continued through February and early March, causing logistical impediments. Given the onset of warm weather, the pace of work has increased.

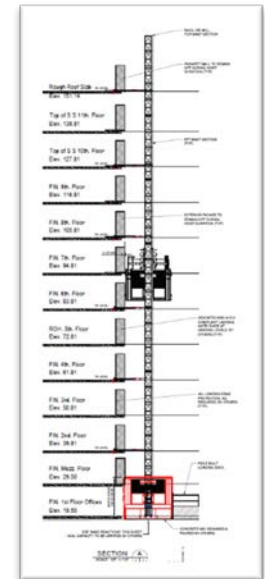
Once the hoist and chute are in place, abatement work will continue on the 11<sup>th</sup> (top) floor and begin moving from floor to floor down the building.

As each floor is completed, it will be cleared by the 3<sup>rd</sup> party air monitor.

Additionally, in coordination with Amtrak, the railroad spur will be separated from both the main track and building. Subsequently the spur will be demolished with appropriate road closures. In addition, protective scaffolding will be installed on the railroad facing side of the building.



Depiction of the hoist to be installed on the exterior of the building on the Montgomery Street façade.



Depiction of the interior waste chute within an elevator shaft.

