

Albany Central Warehouse Abatement & Demolition



The Central Warehouse, prominently located alongside I-787 at the entrance to Downtown Albany, is an 11-story eyesore that has slowly deteriorated in front of the entire Capital Region for the last several decades. While significant attempts have been made to rehabilitate the building, it became clear that demolition is the only viable option.

The project plan includes a six-month asbestos abatement phase immediately followed by a demolition phase. It will generate approximately 90,000 tons of clean concrete which will be sent offsite for beneficial reuse/recycling, diverting this waste stream from the landfill. In addition to removing a prominent, contaminated and deteriorating eyesore, the project will create a 1.1-acre investment-ready site in a growing area of the City of Albany.

"The demolition of the Central Warehouse will not only eliminate blight, unused spaces, but it'll allow for new opportunities to bolster the community and uplift economic growth."

- Governor Kathy Hochul

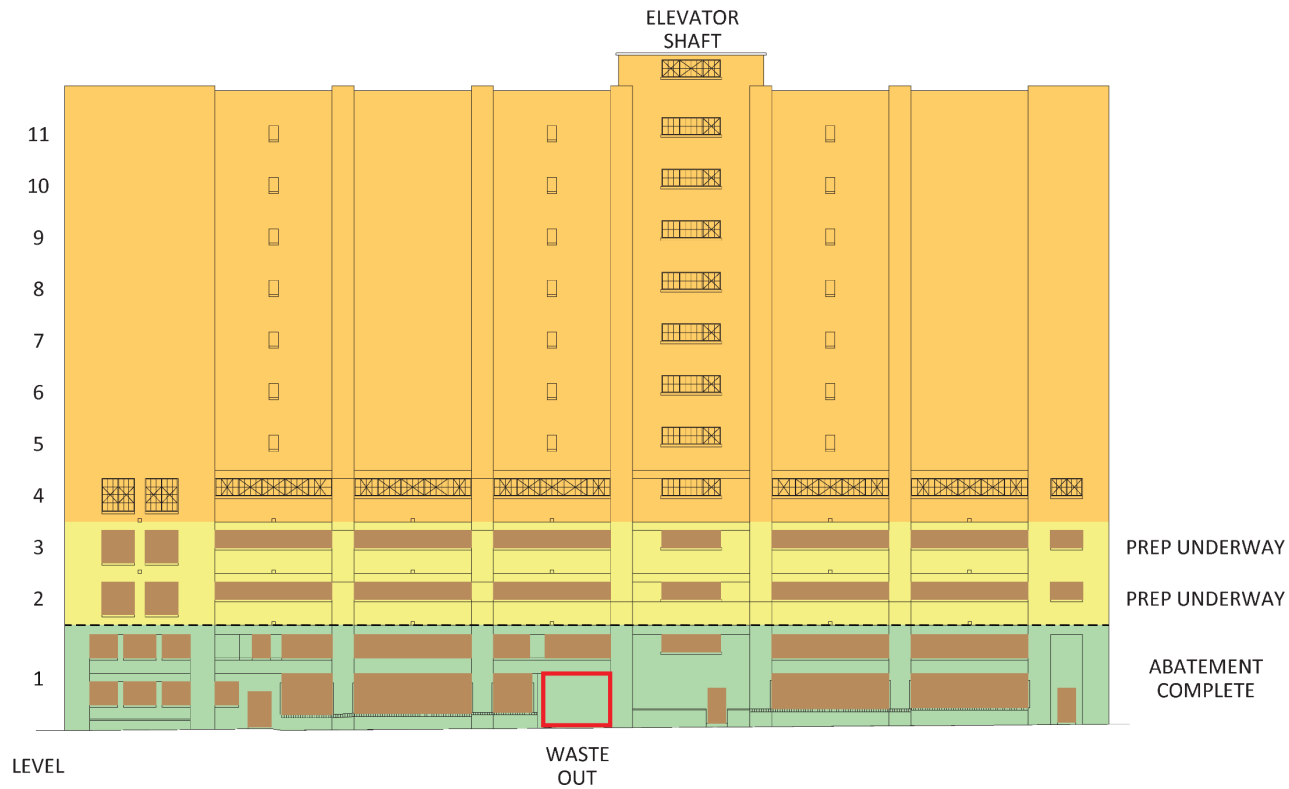


Abatement & Demolition Elements

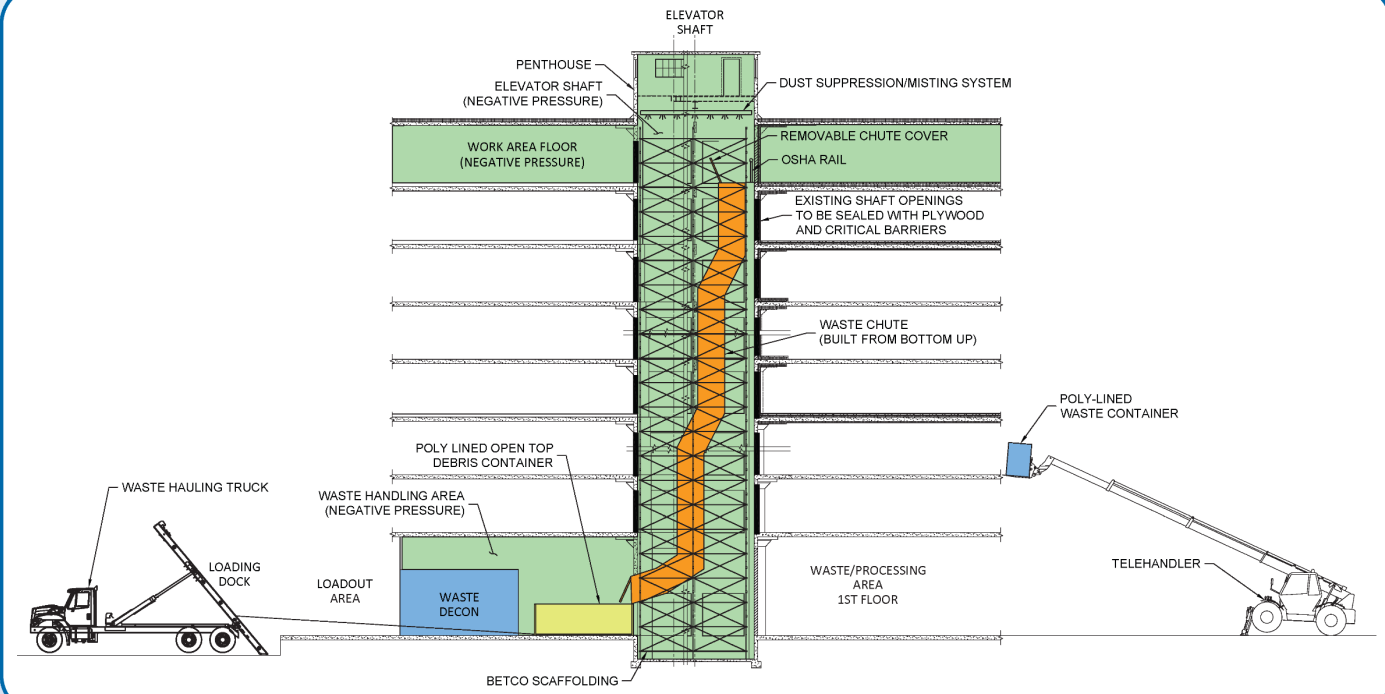
- Protect health and safety of public and workers.
- Remove asbestos, hazardous materials and demolition debris.
- Conduct worker and community air monitoring
- Decontaminate all building interior surfaces.
- Remove building to slab elevation.
- Manage truck traffic and haul routes.
- Continue to protect public at all times.

Albany Central Warehouse Project Progress

ABATEMENT PROGRESS



WASTE OUT OPERATIONS

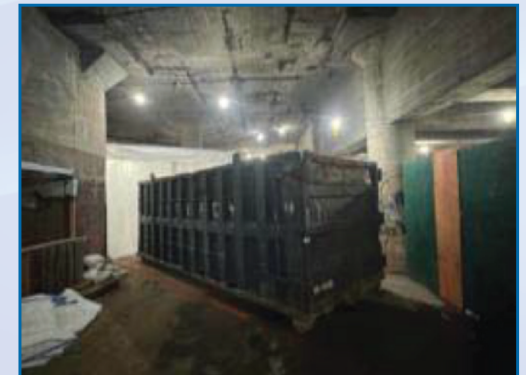


SCHEDULE

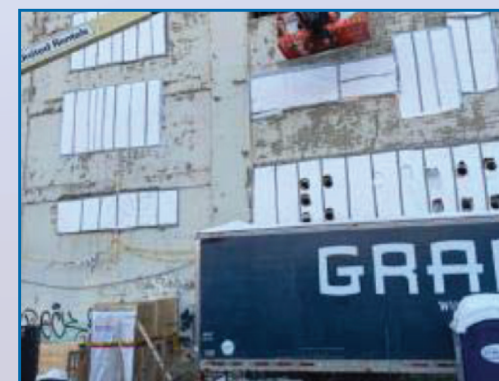
Activity	2026												2027		
	Feb	Mar	Apr	May	Jun	Jul	Aug	Sep	Oct	Nov	Dec	Jan	Feb	Mar	
Abatement	█	█	█	█											
Demo Prep				█											
Demolition				█	█	█	█	█	█	█	█	█			
Final Grading													█		
Punchlist														█	



First Floor ACM Contaminated Debris



ACM Waste Container Inside Building



Sealing Exterior Openings



Isolated Clean Area of the 1st Floor



WORK AREA PREPARATION



WASHING OF BUILDING INTERIOR



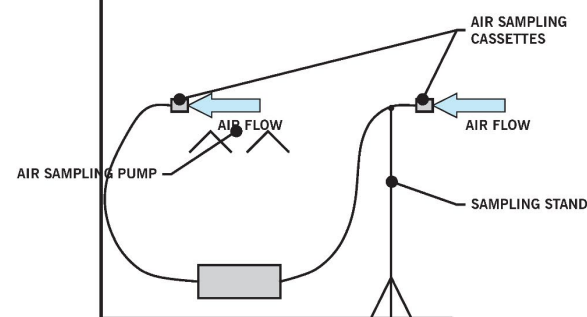
POLY LINED TRUCK FOR ACM TRANSPORTATION



COLLECTION OF WASH WATER

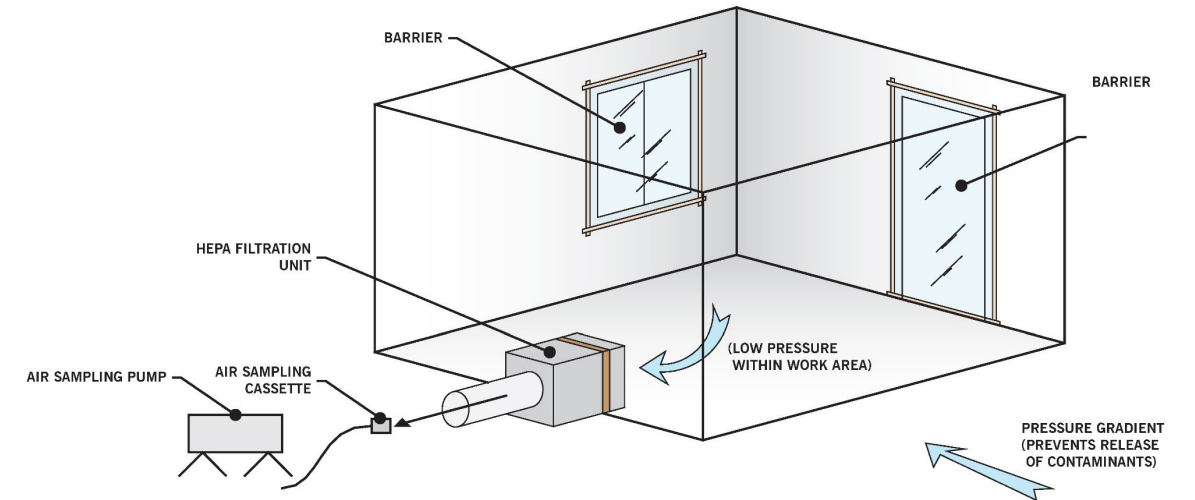
AIR SAMPLING

- Within Work Area
- Outside Work Area
- Worker Exposure

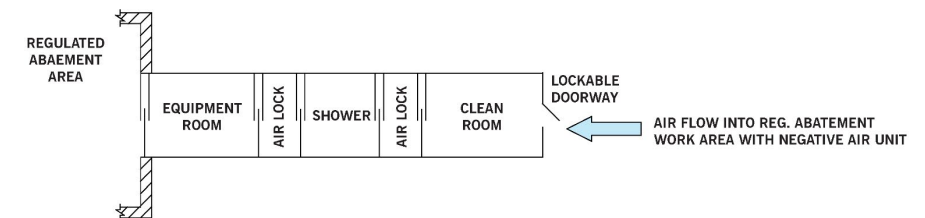


ENGINEERING CONTROLS AND REMOVAL PROCEDURES

Contaminated Work Area with Negative Air Unit



Decontamination Unit



PROJECT REGULATORY COMPLIANCE

New York State Department of Labor

United States Environmental Protection Agency

Occupational Safety and Health Administration

New York State Department of Environmental Conservation
(Waste Disposal)

Albany Central Warehouse Truck Route - Abatement



Albany Central Warehouse Demolition



What to Expect

- Cranes
- Large Equipment
- Rigging and Hoisting
- Dust Suppression
- Utility Work
- Perimeter Fencing
- Sidewalk Closures



RIGGING AND HOISTING



PERIMETER FENCE



SIDEWALK CLOSURE



LARGE EXCAVATORS



DUST SUPPRESSION

Albany Central Warehouse Site Restoration



Communication:

<https://advalbanyalliance.com>